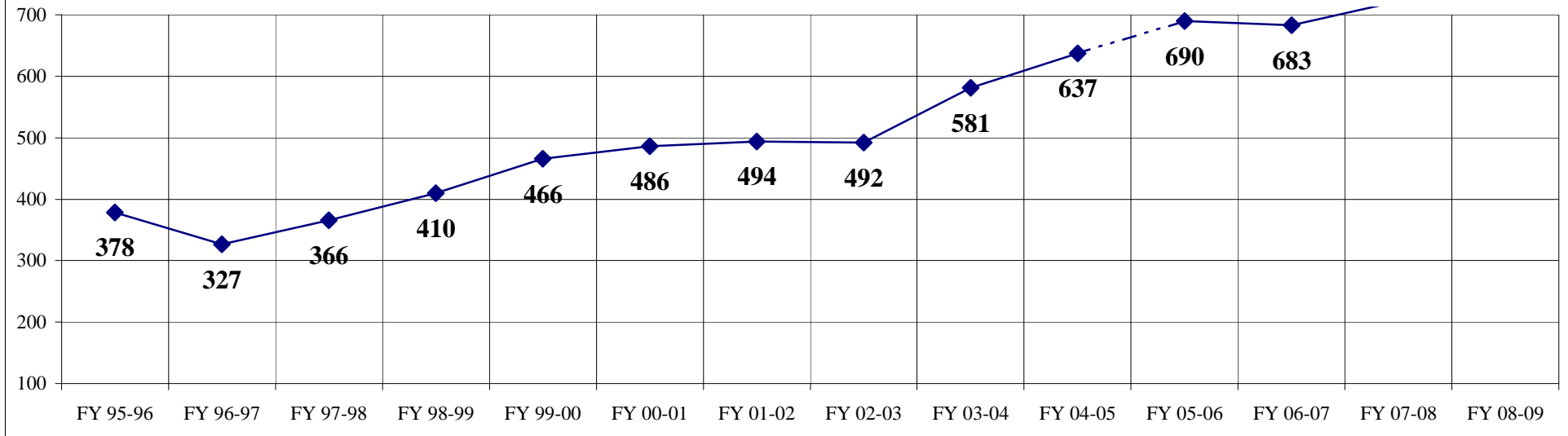


# Admissions

	July	August	September	October	November	December	January	February	March	April	May	June	Total for Year
FY 95-96	30	39	43	32	25	33	32	30	31	21	32	30	378
FY 96-97	27	26	30	24	20	19	34	17	35	41	30	24	327
FY 97-98	25	29	31	33	20	25	31	29	30	39	34	40	366
FY 98-99	44	34	33	31	26	31	40	17	34	43	41	36	410
FY 99-00	27	40	34	38	35	23	41	35	56	44	44	49	466
FY 00-01	40	61	46	51	28	35	51	24	34	28	44	44	486
FY 01-02	41	47	35	36	34	40	39	36	46	54	42	44	494
FY 02-03	44	47	36	34	36	53	42	42	36	38	38	46	492
FY 03-04	47	56	51	55	52	38	50	43	44	41	47	57	581
FY 04-05	57	63	43	49	49	62	49	53	59	55	40	58	637
FY 05-06	60	57	51	75	41	65	41	54	61	63	61	61	690
FY 06-07	51	65	59	58	55	44	52	53	60	61	55	70	683
FY 07-08	63	65	60	51	53	56	64	49	65	79	59	58	722
FY 08-09	60												
Projection for current year	720	720	720	720	720	720	720	720	720	720	720	720	

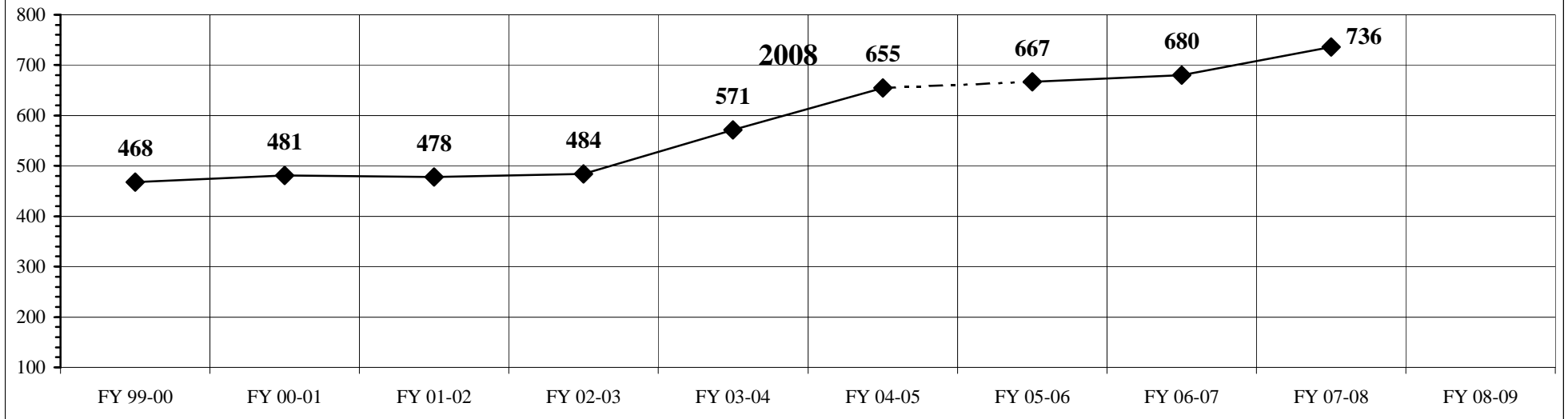
**MSH Admissions  
July 1995 through July 2008**



# Discharges

	July	August	September	October	November	December	January	February	March	April	May	June	Total for Year
FY 99-00	29	40	38	21	28	60	36	34	46	55	44	37	468
FY 00-01	34	47	54	45	30	35	43	42	41	35	41	34	481
FY 01-02	38	37	46	36	33	34	46	32	44	48	47	37	478
FY 02-03	43	46	46	35	35	50	38	36	36	44	37	38	484
FY 03-04	51	47	58	46	49	52	38	50	49	45	40	46	571
FY 04-05	69	63	50	52	48	58	47	53	55	54	51	55	655
FY 05-06	48	58	51	68	46	54	55	51	47	56	63	70	667
FY 06-07	53	81	49	57	50	46	63	46	60	70	47	58	680
FY 07-08	45	82	47	59	49	53	64	63	70	76	68	60	736
FY 08-09	67												
Projection for current year	804	804	804	804	804	804	804	804	804	804	804	804	

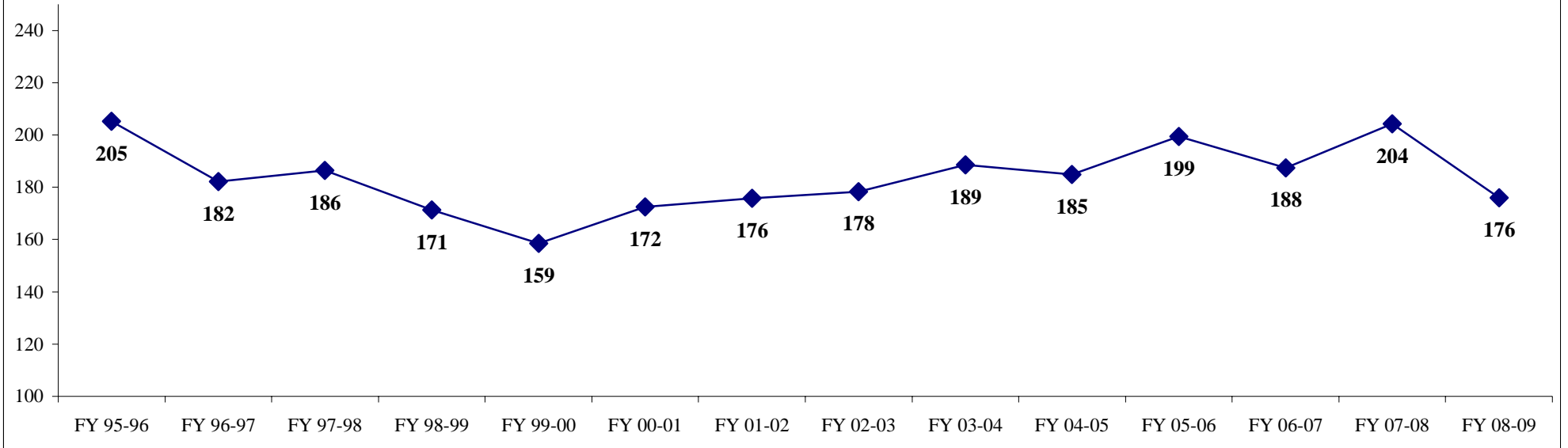
**MSH Discharges  
July 1999 through July**



## Average Daily Census

	July	August	September	October	November	December	January	February	March	April	May	June	Average for Year
FY 95-96	205	212	200	221	221	210	208	199	200	198	198	191	205
FY 96-97	190	184	182	175	172	169	176	173	172	198	198	196	182
FY 97-98	184	189	192	187	178	178	184	188	187	190	190	190	186
FY 98-99	189	184	178	174	171	163	170	166	151	168	168	173	171
FY 99-00	161	162	155	164	173	158	148	149	155	161	153	163	159
FY 00-01	164	185	180	172	183	177	182	177	165	159	159	166	172
FY 01-02	168	175	176	176	170	170	178	173	176	181	182	184	176
FY 02-03	177	184	179	170	172	167	181	181	185	183	180	181	178
FY 03-04	185	184	192	189	196	188	188	188	185	188	187	193	189
FY 04-05	190	193	186	185	182	182	182	182	191	191	178	177	185
FY 05-06	195	196	192	201	198	201	195	194	199	209	210	202	199
FY 06-07	191	181	186	189	189	188	189	190	184	186	183	194	188
FY 07-08	210	206	206	217	208	205	216	209	196	200	193	185	204
FY 08-09	176												176

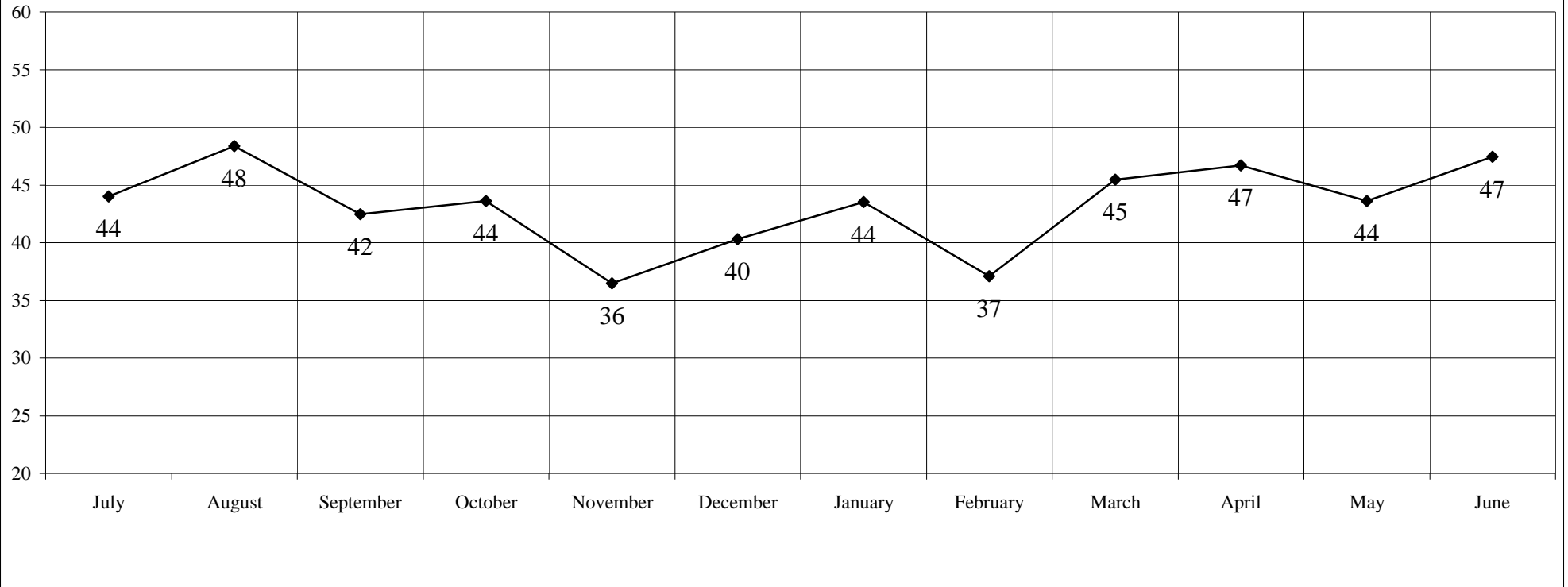
**Average Daily Census  
July 1995 through July 2008**



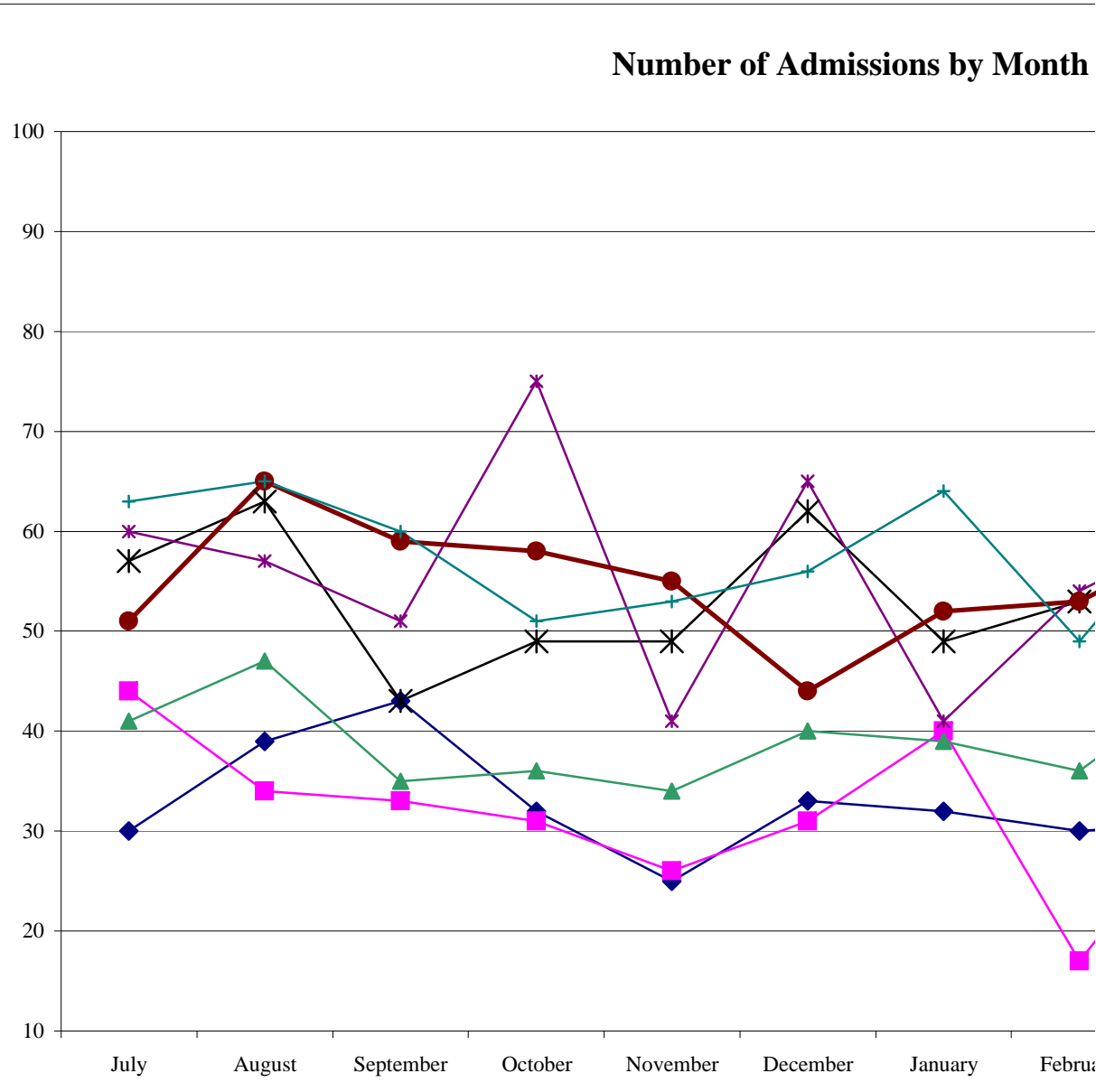
**Average # of Admissions by Month of the Year**

July	August	September	October	November	December	January	February	March	April	May	June
44	48	42	44	36	40	44	37	45	47	44	47

**Average # of Admissions by Month of the Year  
July 1995 - May 2008**



Number of Admissions by Month



351  
348  
699

344

335

679





